



Surgical Solutions USA
Regenerative Product
Catalog

*Surgical
Solutions USA*

RESORBABLE COLLAGEN MEMBRANES (BOVINE)

CYTOPLAST® RTM Collagen



RTM1520
\$175
15mm x 20mm
Membranes per box: 2

RTM2030
\$215
20mm x 30mm
Membranes per box: 2

RTM3040
\$310
30mm x 40mm
Membranes per box: 2

HeliMEND™ & HeliMEND™ ADVANCED (**identical to Biomend® and Biomend Extend®)

HeliMEND is absorbed in 4-8 weeks whilst HeliMEND ADVANCED is absorbed in 18 weeks



MX62-203	Helimend 15 x 20mm	ea	\$71.50
MX62-204	Helimend 20 x 30mm	ea	\$90.00
MX62-205	Helimend 30 x 40 mm	ea	\$142.00
MX62-206	Helimand Advanced 15 x 20mm	ea	\$83.50
MX62-207	Helimend Advanced 20 x 30mm	ea	\$100.00
MX-62-208	Helimend Advanced 30 x 40mm	ea	\$146.50

**Biomend® and Biomend Extend® are registered trademarks of ZIMMER Dental

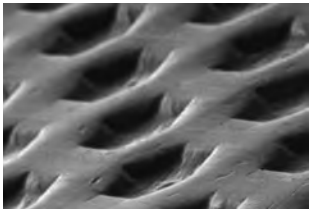
Call to Order T 877.266.3360 • F 877.719.2071

Surgical
Solutions USA

NON-RESORBABLE MEMBRANES

THE ORIGINAL, PATENTED, HIGH-DENSITY PTFE MEMBRANE

- Non-resorbable - won't resorb prematurely, clinician dictates healing time
- 100% Dense (non-expanded) PTFE; pore size less than 0.3 μm - impervious to bacteria
- Purposely leave the membrane exposed - less surgical time, preservation of soft tissue architecture and keratinized mucosa
- Soft tissue attached, but doesn't grow through the membrane - exposed membrane allows for non-surgical removal
- Hexagonal dimples increase surface area - textures surface helps prevent retraction



The patented Regentex™ surface helps stabilize the membrane, and the soft tissue flap.

CYTOPLAST® Ti-250 Anterior Narrow

12mm x 20mm

Ti250AN-1 \$110

Ti250AN-2 \$200

Ideal for narrow single-tooth extraction sites, especially where one or more bony walls are missing.



CYTOPLAST® Ti-250 Anterior Singles

14mm x 24mm

Ti250AS-1 \$140

Ti250AS-2 \$250

Ideal size and shape for single-tooth extraction sites, especially where one or more bony walls are missing.



CYTOPLAST® Ti-250 Posterior

20mm x 25mm

Ti250PS-2 \$325

25mm x 30mm

Ti250PL-2 \$365

Designed for grafting posterior extraction sites and limited ridge augmentation.



CYTOPLAST® Ti-250 Anterior Perio

13mm x 19mm

Ti250AP-1 \$120

Ti250AP-2 \$220

Designed to fit periodontal defects in the anterior



CYTOPLAST® Ti-250 Posterior Perio

13mm x 18mm

Ti250PP-1 \$120

Ti250PP-2 \$220

Designed to fit periodontal defects in the posterior



CYTOPLAST® Ti-250 Buccal

17mm x 25mm

Ti250BL-1 \$150

Ti250BL-2 \$270

Designed for grafting large buccal defects



CYTOPLAST® Ti-250 XL

30mm x 40mm

Ti250XL-1 \$250

Ti250XL-2 \$450

Designed for grafting very large bony defects especially ridge augmentation



CYTOPLAST® TXT-200/Singles

12mm x 24mm

TXT1224-1 \$50

TXT1224 (10/box) \$400



25mm x 30mm

TXT2530-1 (1/box) \$80

TXT2530 (4/box) \$280



*** Products shown are NOT actual size.

ADJUSTABLE TORQUE WRENCH



Adjustable Torque Wrench # ATW

\$399

- ▶ Torque settings lock into select Location for accuracy and repeatability
- ▶ Ratchet clutch disengages (slips) when torque is applied to avoid over torquing
- ▶ Torque settings are provided for use with all implant designs

9 Torque Settings: 15, 20, 25, 30, 35, 40, 45, 50 & 60 Ncm

Torque Control

Tightening with the correct torque minimizes the risk of the screw working loose and improves the precision during bridge fabrication. Torque Control can also reduce the risk for stress being built into the restoration and prevents component

Easy to use

Insert the screw or abutment into the implant with the appropriate driver and thumb knob manually and tighten with finger pressure. Final seat with the Precise Adjustable Torque Wrench with torque setting recommended by manufacturer. Pre-load the screw or abutment by using the torque wrench in the same way as a ratchet wrench. The wrench will slip when the selected torque is applied.



DRIVER TIPS

Driver Insert Chart

IMPLANT SYSTEM	Driver Insert Chart									
	0.350 HCT	0.040 HSM	0.048 HNT	0.050 HTT	0.052 HS	0.062 HSL	0.080 HJ	0.080 HUL	0.090 HFD	STAR ITI
NobelBiocare	•		•						•	
Keystone Dental	•		•		•	•				
Steri-Oss				•						
Straumann/ITI										•
Friadent	•	•	•							
Impla-Med			•						•	
Implant Innovation /3i	•		•						•	
Imtec				•						
Implant Direct				•						
Zimmer				•			•	•		
BioHorizons	•			•						
Astra				•						
Camlog				•						
Innova				•						
PRICE	\$39	\$39	\$39	\$39	\$39	\$39	\$39	\$39	\$39	\$39

Abutment Torque Chart (Ncm)

Abutment Torque Chart (Ncm)		
20 Ncm	30 - 32 Ncm	35 Ncm
Lifecore/Keystone	Lifecore/Keystone	Lifecore/Keystone
3i/Biomet	3i/Biomet	3i/Biomet
Innova/Sybron	Innova/Sybron	n/a
Astra	n/a	n/a
Friadent/Dentsply	Friadent/Dentsply	n/a
n/a	Implant Direct	Implant Direct
n/a	Neoss	n/a
Zimmer	Zimmer	n/a
n/a	n/a	NobelBiocare
n/a	BioHorizons	n/a
n/a	n/a	Straumann/ITI
Imtec	n/a	n/a

IMPLANT GUIDANCE SYSTEM (IGS)

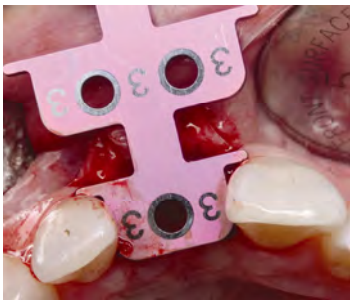
Designed to ensure ideal implant diameter, spacing and draw



Color-Coded Instrumentation for 4 implant diameters

- Mini** ■ for implants of 3 mm diam
- Standard** ■ for implants of 3.3 - 3.6mm diam
- Regular** ■ for implants of 3.75 - 4.3mm diam
- Wide** ■ for implants of 5.0 - 5.5 mm diam

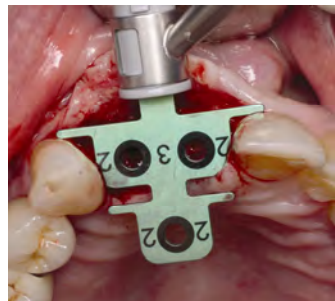
- Designed to be used in place of OR in conjunction with a customized surgical implant stent
- Can be used with ANY commercially available dental implant system
- Provides CORRECT bucco-lingual & mesio-distal spacing
- Color-coded for 4 different implant diameters (**mini**, **standard**, **regular**, **wide**)
- Titanium componentry for sterilization and oral biocompatibility
- Increases profitability given accuracy and simplicity
- Decreases chair time



Sizing Blade (SD) is slid into edentulous area from the buccal ensuring a snug fit



Round bur being used to demarcate and indent the correct implant insertion point through perforation of the sizing blade



Correctly sized Green Blade (accommodates regular diam (RD) implants of 3.75mm - 4.3mm. Allows 2mm from tooth to outer edge of implant.



Indentation on measuring pin parallels the 2mm twist bur to be both parallel and Correctly spaced for that diam implant.

Contents

4 x color-coded Parallel Pins (in all 4 diameters) (2mm/Final diameter) ■ ■ ■ ■

4 x Measuring Pins with 3 wings on each ■ ■ ■ ■
(2mm for implant-implant, 3mm for implant-tooth, and indentation groove for parallelism)



Blades in all 4 diameters ■ ■ ■ ■
(with 2mm as well as 3mm measurements for both single and multiple implants)



2mm - 2mm
2mm - 3mm - 2mm



3mm - 3mm
3mm - 3mm - 3mm

OSTEO-MESH™ TM-300 (TITANIUM MESH)

Benefits of Nitride Coating

- High coating density with no pores to hold contaminants
- Will not stain or corrode
- Withstands acids, bases, solvents and high temperatures
- Outstanding wear resistance

Features

- Ultra-thin; 0.2mm thick - easier to get primary closure
- 0.3mm pore size - contains most graft materials
- Safe, highly inert, non-reactive, non-stick nitride coating - improves tissue release upon removal
- May be repeatedly sterilized by autoclave - unused portions are not wasted

25mm x 34mm

TM2534 \$75 ea

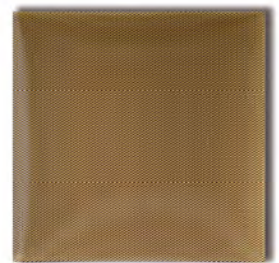
(provided non-sterile)



45mm x 45mm

TM4545 \$100 ea

(provided non-sterile)



COLLAGEN WOUND DRESSINGS



MX62-200 \$145/box

HeliTAPE® (10 units/box)

Indications for use:

- ⇒ Protect the wound site
- ⇒ Repair of Schneiderian Membrane
- ⇒ Controls bleeding due to hemostatic nature of Collagen



MX62-202 \$125/box

HeliPLUG® (10units/box)

Indications for use:

- ⇒ Aids in the closure of extraction sites
- ⇒ Control bleeding in extraction sites
- ⇒ Controls bleeding in biopsy sites



MX62-201 \$125/box

HeliCOTE® (10 units/box)

Indications for use:

- ⇒ Palatal donor sites
- ⇒ Mucosal flaps

MINERALIZED (ALLOGRAFT) HUMAN BONE

Osteogrow/Osteokor - The Gold Standard in Oral Bone Regenerative Therapy

OSTEOGROW/OSTEOKOR CORTICO/CANCELLOUS (Mineralized)

- The ideal mixture of Cortical and Cancellous particulate
- Completely Remodels to patients own bone
- Provides a scaffold for cell migration as well as a lattice for rapid bone formation

DIS-CCO	Osteogrow	Cort/Cancellous Particulate	250-1000µ	0.5cc	\$72
DIS-CC1	Osteogrow	Cort/Cancellous Particulate	250-1000µ	1cc	\$92
DIS-CC2	Osteogrow	Cort/Cancellous Particulate	250-1000µ	2cc	\$154
DIS-CC5	Osteogrow	Cort/Cancellous Particulate	250-1000µ	5cc	\$296
DIS-RDGE	Osteogrow	Cort/Cancellous Particulate	250-1000µ	12 x 1cc	\$960
DIS-SINUS	Osteogrow	Cort/Cancellous Particulate	250-1000µ	8(1cc) + 2(5cc)	\$1199

INDICATIONS

- When clinician requires a graft with the hydroxyapatite component of autologous bone
- Applicable in cases where a scaffold and longer resorption is required
- Can be used alone or with mixture of autogenous bone in order to
- Increase the osteoinductive properties of the graft
- Completely remodels



OSTEOGROW/OSTEOKOR CANCELLOUS (Mineralized)

DIS-CAO5	Osteogrow	Cancellous Particulate	250-1000µ	0.5cc	\$72
DIS-CA1	Osteogrow	Cancellous Particulate	250-1000µ	1cc	\$92
DIS-CA2	Osteogrow	Cancellous Particulate	250-1000µ	2cc	\$154

OSTEOGROW/OSTEOKOR CORTICAL (Demineralized)

- According to the AATB, no cases of HIV transmissions have been reported in more than 2 million cases of allograft bone in the past 5 years
- Due to the removal of Hydroxyapatite component, potential growth factors are exposed, this graft resorbs quicker and is less dense than mineralized grafts.

DIS-CDO5 Osteogrow Cort/Demineralized Particulate 250-1000µ 0.5cc \$72



TISSUE PROCESSING

Osteogrow/Osteokor is prepared with stringent standards as required by the American Association of Tissue Banks (AATB).

CYTOPLAST® PTFE SUTURE

COMMON APPLICATIONS

- ⇒ Bone grafting procedures
- ⇒ Guided tissue regeneration
- ⇒ Implant surgery
- ⇒ Periodontal surgery
- ⇒ Ridge augmentation
- ⇒ Soft tissue grafts



CS051819

New 300 series stainless steel needle - especially for dental implant and bone grafting procedures.

Size: USP 3-0

Needle: 19 mm 3/8 Circle Reverse Cutting
12 per box

\$100

CS0418

19 mm reverse cutting needle, which is popular for procedures where a longer needle is desired.

Size: USP 2-0

Needle: 19 mm 3/8 Circle Reverse Cutting
12 per box

\$100

CS0518

Most popular size especially for dental implant and bone grafting procedures.

Size: USP 3-0

Needle: 16 mm 3/8 Circle Reverse Cutting
12 per box

\$100

CS0618 RC

Most popular of the smaller CS-06 sutures, 16 mm reverse cutting needle. Often used for dental implant and bone grafting procedures.

Size: USP 4-0

Needle: 16 mm 3/8 Circle Reverse Cutting
12 per box

\$100

CS0618 PERIO

13 mm taper point needle. Often used on soft tissue grafts and suturing of delicate tissues that require an atraumatic needle.

Size: USP 4-0

Needle: 13 mm 1/2 Circle Taper Point
12 per box

\$100

CS0618 PREM

Offers over 50% longer cutting edges, giving needles a more slender, defined shape that greatly decreases the force applied to the needle during surgery.

Size: USP 4-0

Needle: 13 mm 3/8 Circle Premium Reverse Cutting
12 per box

\$120



Benefits

- Non-resorbable medical grade PTFE
- Monofilament construction eliminates bacterial wicking
- Biologically inert & chemically non-reactive
- Not subject to weakening by tissue enzymes
- Excellent soft tissue response
- Soft; increased patient comfort
- Great handling, knot-tying & knot-holding characteristics

*** Products shown are NOT actual size.